



Infor XA

With **Material Logistics** for XA, customers can link multiple plants to transfer inventory, demand, forecasts, or orders and provide product fulfillment to the correct destination.

Material Logistics (ML)

General Information Manual



Material Logistics is designed to meet your global fulfillment requirements for your customers, for your manufacturing, and for your supply chain. ML uses single or multiple planning warehouses within single or multiple XA environments on single or multiple IBM iSeries to manage your complete distribution requirement.

Material Logistics coordinates all the aspects of transferring and distributing demand and it manages all aspects of the process:

COMMUNICATION

The functions required to communicate demand and supply between multiple sites.

PLANNING

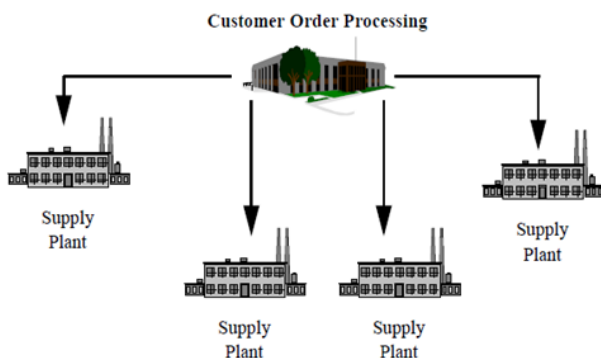
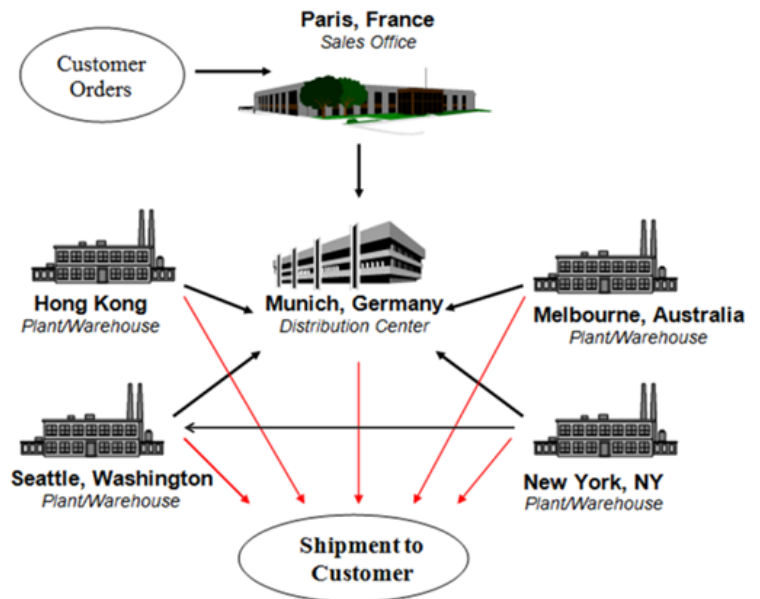
Forecasts and Demand Requirements Planning functions for multiple production and distribution facilities.

LOGISTICS

The tools to manage logistics of material and products across multiple sites.

Material Logistics (ML) will provide you the business solution you have been looking for. The number of manufacturing and distribution enterprises to which Material Logistics applies is quite large and varied. Some typical situations which necessitate this type of multi-facility solution:

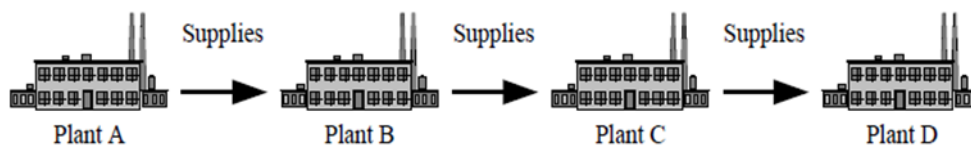
- Manufacturing facilities act as vendors to each other to make sub-assemblies or off-load capacity.
- Products are shipped to an outside processor before being shipped to another plant.
- High volume centralized order processing, decentralized multi-plant manufacturing.
- Decentralized order processing, decentralized distribution and centralized manufacturing.
- Distribution warehouses planning is independent from the production facility.
- Inventory orders must be placed and traced between the supplying plants and distribution facilities - DRP (Distribution Requirements Planning).



From **Material Logistics** we can:

- Create, change and delete Transfer Orders, lines and releases: We can, subsequently, release Transfer Orders, lines and releases to make them open for shipping and receiving activity.
- Create, change and delete Enterprise Warehouses, assigning on System Link Destinations environments and associated XA Planning Warehouses as well as In-transit Warehouses.
- Create, change and delete Enterprise Warehouse Trade Relations. Assigning In-transit inventory ownership and customer information for the relationship and location.

Supply Chain Processing



Material Logistics can also:

- Maintain Material Logistics application settings.
- Ship Material Logistics transfer orders through COM or CSM.
- Receive Material Logistics Orders through the Material Management applications Scheduled Receipts.



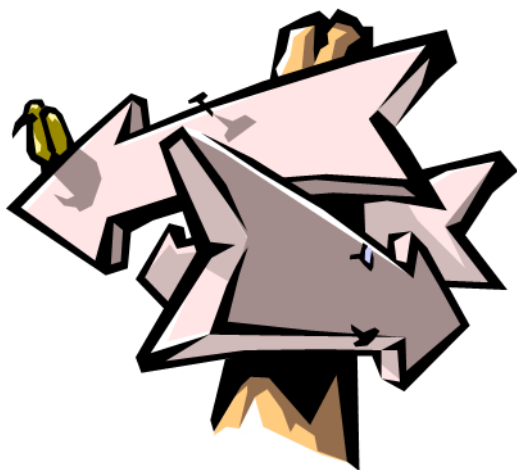
Major Functions of Material Logistics

1. Manage Independent Demand (Customer Fulfillment) to the most efficient plant or warehouse

Material Logistics allows global organizations using the Infor XA ERP system to process customer orders from centralized or divergent locations and fulfill orders based on the most efficient location. ML is ideally suited for organizations with multiple plants, warehouses, or even multiple Infor XA environments. ML allows you to automatically fill orders from the most efficient location based on: customer location, product availability, and other considerations. ML also allows you to automatically update invoicing for a centralized customer order based on activities at remote locations.

Some system highlights:

- Automatically drop-ship from the most efficient plant or warehouse based on customer location, available stock, and currency considerations.
- Check immediate item availability, and allocate, throughout all plants, warehouses, and distribution centers from a central sales office.
- Automatically update a central customer order with activities from remote locations for invoicing.
- Accept internet orders and route to appropriate processing centers automatically.
- Gain visibility across multiple companies on a single environment.



2. Manage Component Demand to/from a different plant or warehouse

ML, along with the Infor ERP XA planning applications, addresses your supply chain management needs by integrating both the planning and execution of intersite demand and supply across sites and systems. Users can plan demand for each distribution and production site with the XA planning applications.

Distribution Requirements Planning (DRP) is now a reality. With ML, you can identify items in each site that are supplied from other sites. The time-phased planned demand for those items can be sent to the supplying site and then used in its production planning process.

Material Logistics also provides for creating, updating, shipping and receiving of intersite orders, tracking and maintaining visibility of the order at both sites, including while in transit between sites, and allowing each site the appropriate control over the intersite order during its life cycle.

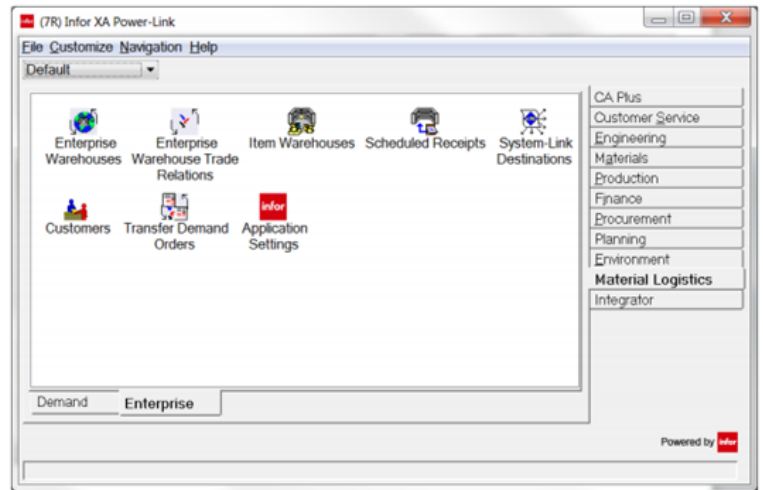
3. Vendor drop-ship to customers

The Vendor Drop Ship capability in ML allows vendors to directly drop ship products from their plants or warehouses directly to the end customers. This capability eliminates the need for the internal material handling transactions that were previously required. Vendor payment and customer invoicing is performed within XA, and the required tracking and visibility is addressed without manual intervention.

This vendor drop ship concept is similar to the Amazon business model. This revolutionary approach reduces the need to carry a large amount of inventory, or consume excess warehouse space. This cost efficient approach leverages your existing supply chain, increases sales, and reduces costs.

Infor XA Material Logistics Key Features & Functions

- The creation and maintenance of Transfer orders within and across environments from ML, OBPM or Advanced Planning
- Multiple items and releases per Transfer order
- Shipping of the Customer order that is associated with the Transfer order from CSM
- Use of IDF view, subset, sort, search, etc. tools
- Receiving of the scheduled receipt that is associated with the Transfer order within Materials Management
- The ability to designate demand or supply owned inventory when an order is shipped
- The ability to designate whether or not the customer order, when shipped, is allowed to be invoiced
- The ability to pass Transfer order demand from one warehouse to another
- Accounts payable invoice (API) processing for those orders that are invoiced
- Deferred transfer order release



Guide Technologies, LLC

Cincinnati • Indianapolis • Los Angeles
(888) 419-1939

www.guidetechnologies.com
info@guidetechnologies.com



Gold Channel Partner